

GURU BROWSER

The Guru Browser application provides a search, import, export, and revision history viewing tool for all objects and resources on a Cassini test system and networked Guru Servers. It is accessed through the Apps button found on the right side of the screen of the Cassini test system environment as shown in [Figure 1.73](#).

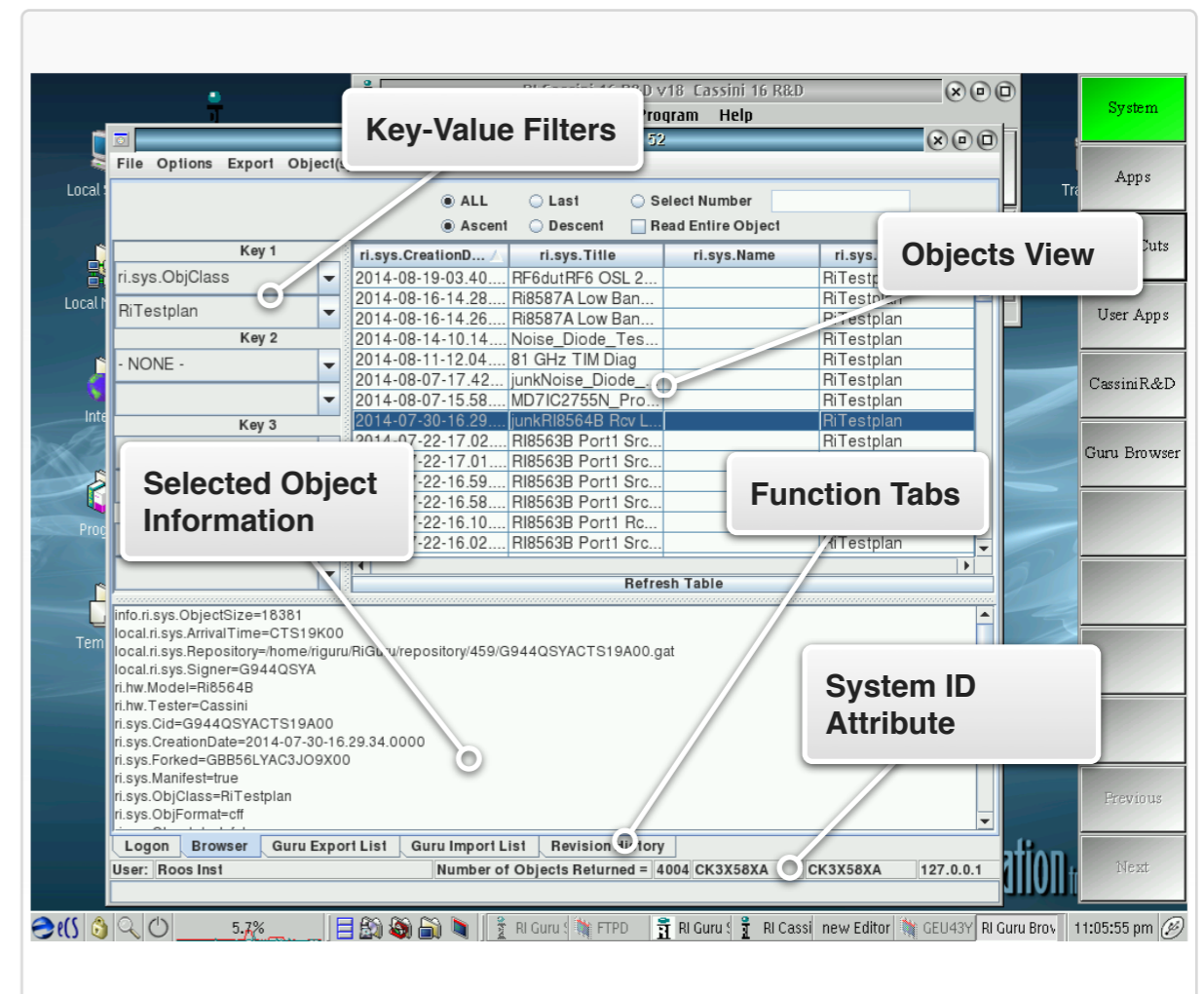
BROWSER

The Guru Browser window, shown in [Figure 1.72](#), displays objects in a tabulated view in the center pane. Each row represents a single object with columns representing an attribute key type. Left-clicking on an object in the tabulated view will highlight the object row and display all object key-value pairs in a list view in the pane below the tabulated view. This list of key-value pair attributes provides the user with more information about the object such as: object size, object class, the object's creation date, Guru ID of the system that created it, and more. Left-clicking on a column heading will organize the object rows in ascending or descending order with respect to the selected key type. On the left side of the Guru browser window are drop-down lists selections of attribute key-value pairs. The drop-down selections allow the user to filter object searches against up to four key-value pair criteria. Listed along the bottom of the Guru Browser window are the function tabs. Clicking on these tabs switches between the various functions of Guru browser, providing a window layout optimized for the selected feature functionality.

GURU EXPORT LIST

The Guru Export List tab is used for exporting objects and/or groups of objects from a Guru as .gzip files. An example of the Guru export list layout is shown in [Figure 1.74](#). This tool is useful for transferring Guru objects via email or FTP other Gurus or to Roos Instruments support. Objects from the browser tab can be added to the export list by selecting them in the tabulated view and choosing the **Export >**

FIGURE 1.72 GURU BROWSER



Send to Export List options from the Guru browser's top menu selections. The list of objects are displayed in their tabulated view of the export list. The various export list button options are provided on the left side of the window.

FIGURE 1.73 ACCESSING GURU BROWSER

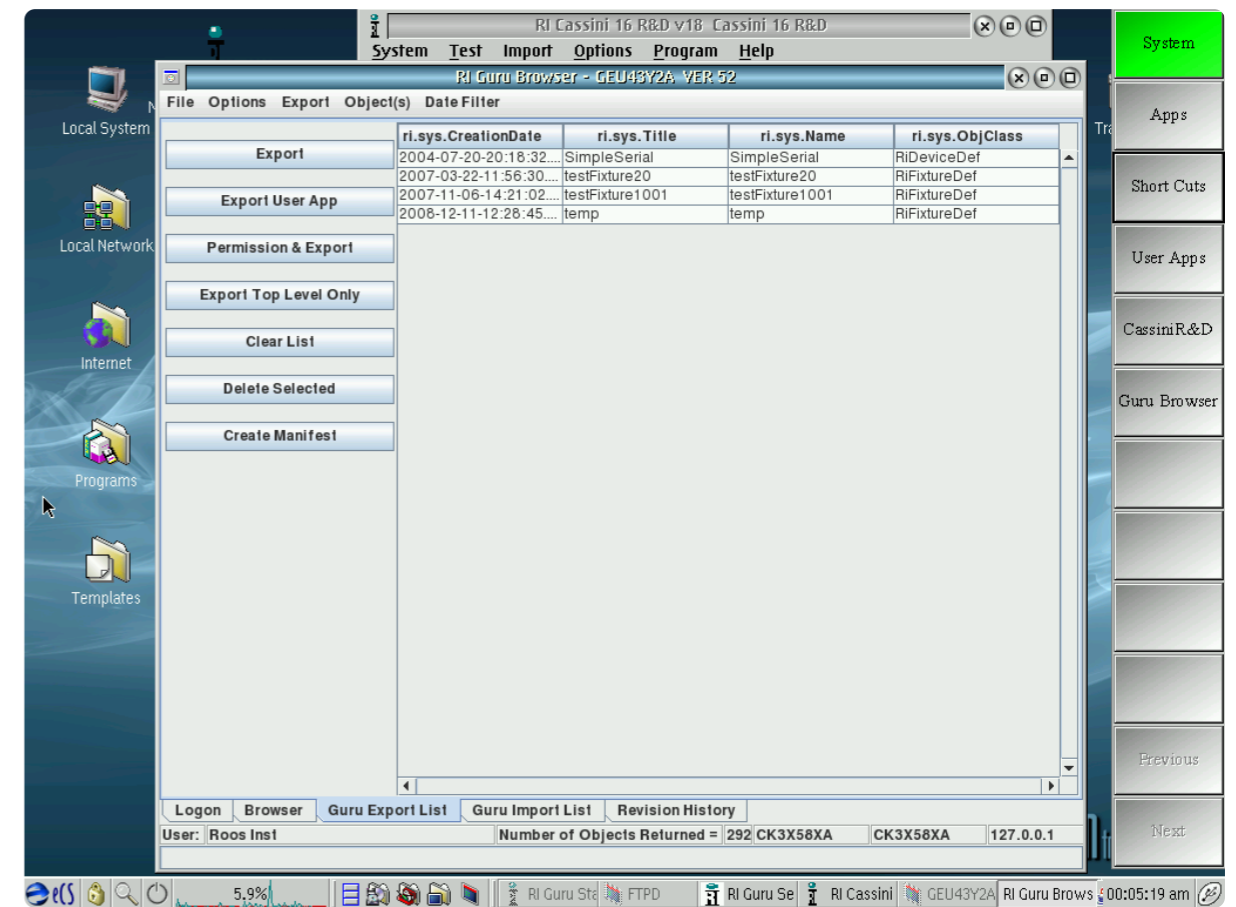


Access Guru Browser by selecting the Apps button and then selecting Guru Browser from the scroll list of applications

GURU IMPORT LIST

The Guru importer tab option is used for importing objects and/or groups of objects into Guru from a .gzip file attachment or USB key. This tool is useful for loading objects such as TIM-specific calibration data into a Cassini test system's local Guru. An example of the Guru import list tab layout is shown in [Figure 1.75](#).

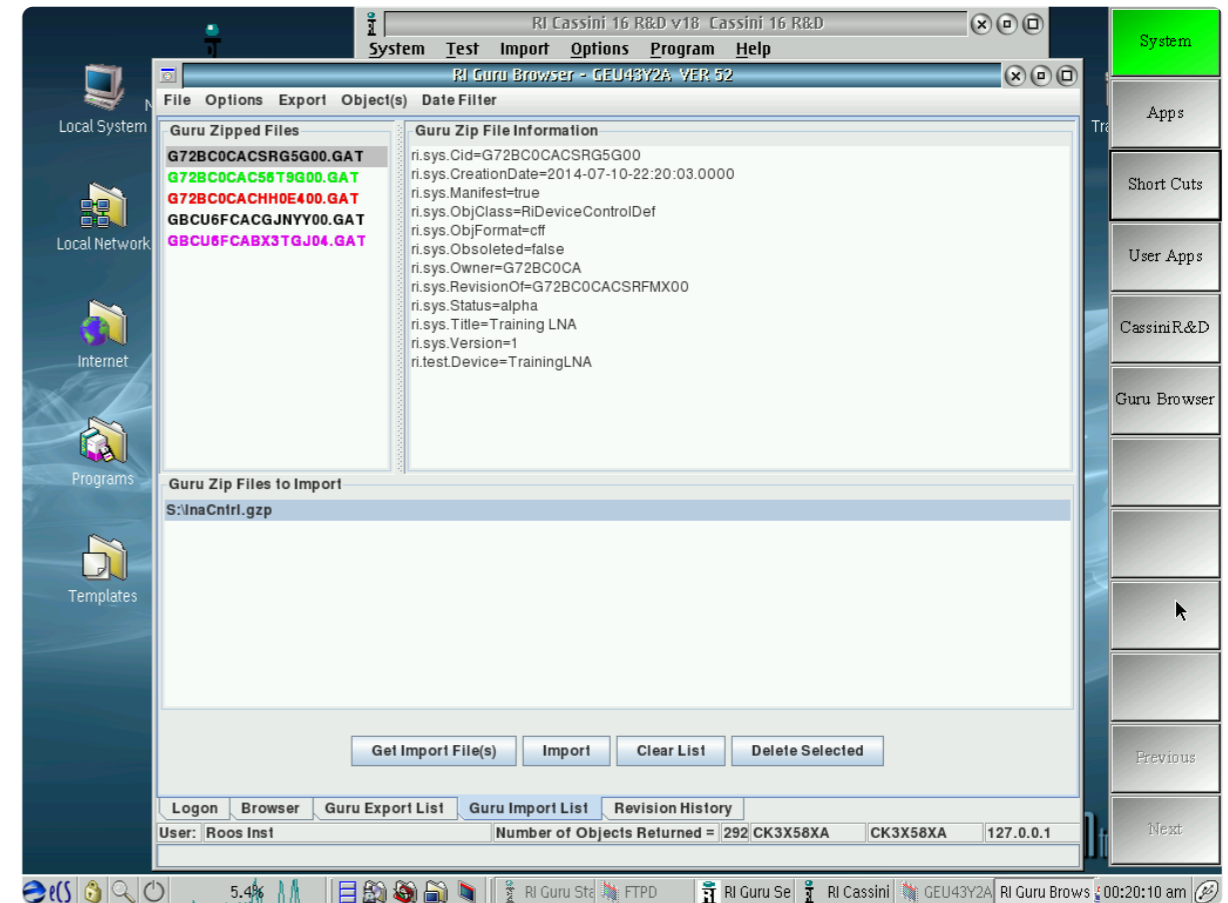
FIGURE 1.74 GURU EXPORT LIST TAB VIEW



The importer tab view is divided into three panes. The bottom pane lists .gzp files to be imported into Guru. Selecting the Get Import File(s) provides a pop-up window for selecting .gzp files for import. The selected .gzp will be listed in the lower pane of the window. Selecting a .gzp in this list, and then left-clicking the upper left pane will list the contents of the .gzp file, typically objects or groups of objects as .GAT files. Highlighting these .GAT files by left-clicking on a file in this pane will display a list view of the object's attribute key-value pairs in the pane to the right. Selecting the Import button on a selected .gzp file will import its contents in Guru. Guru will automatically resolve revision/version conflicts of imported objects with the system's local Guru. The importer GUI provides visual cues of the revision resolution actions the importer will take with individual objects within an imported file as shown in [Figure 1.75](#):

- **Green** text denotes objects that do not currently exist in the local Guru and will be imported.
- **Red** text denotes that the object to be imported is newer than the version that exists on the local Guru. This object will be imported, and when requested by an application, the imported version will be used. The older version will be saved in the local guru's revision history.
- **Magenta** text denotes that the object to be imported is older than the version that exists on the local Guru. This object will be imported, and when the object resource is requested by an application, the current version on the local Guru will be used. The imported older version will be saved in local guru's revision history.

FIGURE 1.75 GURU IMPORT LIST TAB VIEW



- **Black** text denotes that the object already exists in the local Guru and is the most current version and as such, the object in the import list will not be imported.

NOTE: Always save resources and close applications that may create versions of objects that are being imported.

REVISION HISTORY

The Guru revision history tab is used for viewing the revision history of an object. An example of the revision history tab layout is shown in [Figure 1.76](#). Selecting an object in the tabulated view of the Browser, and then clicking on the Revision History tab will display a table view of the selected object's file history in the top pane. The columns of the table view display the object's Name, Creation Date, and Version attribute keys. Left-clicking on the column headers will sort the table in ascending or descending order with respect to the selected key type. Left-clicking on a version in the table will highlight the row and display or refresh the object version's information in a list view in the pane below the table. Right-clicking on an object revision in the table provides a menu with options to 'Remove from local,' 'Make Last RevisionOf,' and 'Send to Export List.' The 'Remove from Local' option will remove the selected object version from the local Guru. The 'Make Last RevisionOf' option will make the currently selected version of the object into the latest version. Applications that use this object will now use this version of the object. The 'Send to Export List' option will add the selected version to the Guru Export List.

CAUTION: DO NOT remove or alter the revision version of an object without consent from authorized personnel.

FIGURE 1.76 GURU REVISION HISTORY TAB VIEW

