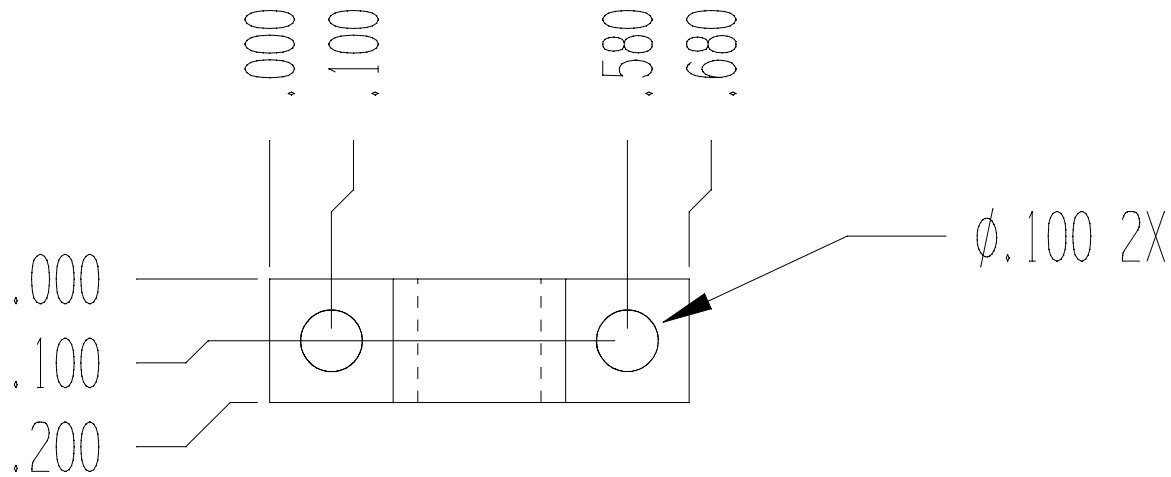
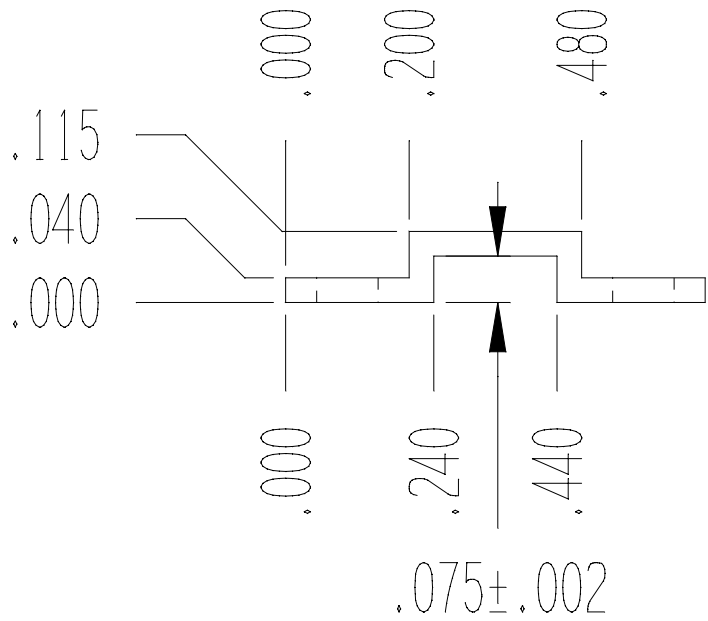


REVISIONS			
REV	DESCRIPTION	DATE	APPROVED
A	INITIAL RELEASE	8-2-10	JM



MATERIAL: 6061-T6  
 FINISH: ETCH AND CLEAR ALODINE



TOLERANCE: XX $\pm .01$ XXX $\pm .005$ MACHINED SURFACES 63	ROOS INSTRUMENTS	
	SUPPORT MMPX TOP	
RI CONFIDENTIAL AND PRIVILEGED INFORMATION	RI DWG# ONEFIXDUAL2	RI P/N WIMFEUVA
	LEVEL X	SHEET 1 OF 1